

March 2007

## Technical Bulletin - Firmware Identification Trimble Ag252

### Procedure to identify the Firmware Version using AgRemote Software

OmniSTAR requires your firmware on your GPS receiver to be upgraded, in order to maintain a high standard of service from your GPS receiver. (Please note this procedure is different from the Frequency Changeover to OCSAT).

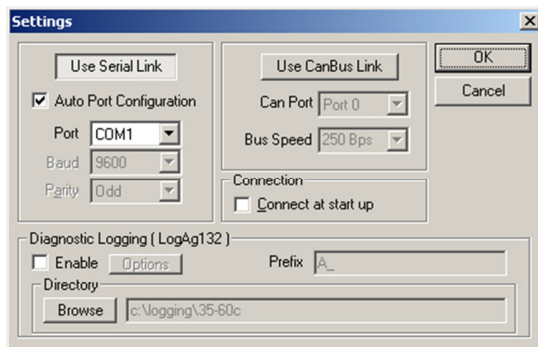
1. Connect a data cable between a suitable PC and the DGPS receiver.
2. On the receiver use the other data port from that which you use in normal operation.



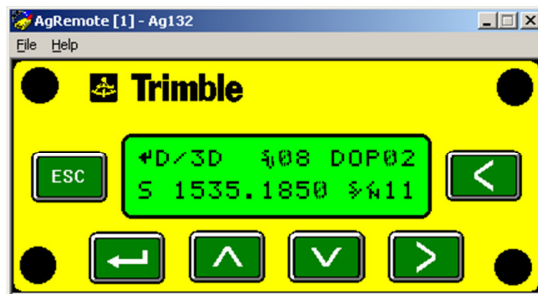
3. From The AgRemote menus select FILE and then CONNECT.

**This document is for informational purposes only and is not a legally binding agreement or offer. Trimble makes no warranties and assumes no obligations or liabilities hereunder.**

- The screen below will appear.



- Ensure you have the correct COM port selected. It should match the port on the PC you are using. Typically COM1.
- Have the AUTO PORT CONFIGURATION box ticked. Press OK.




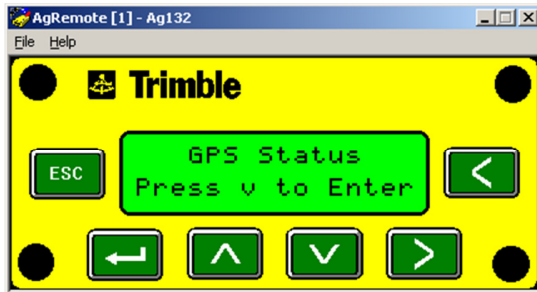
From the HOME screen:




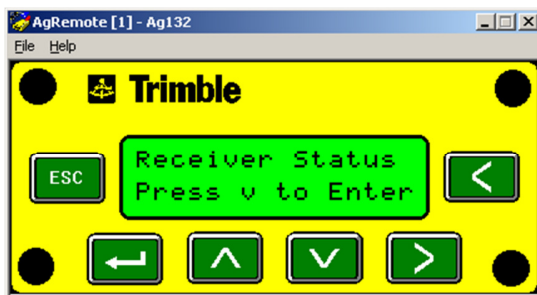
- Press the Right arrow until STATUS appears.



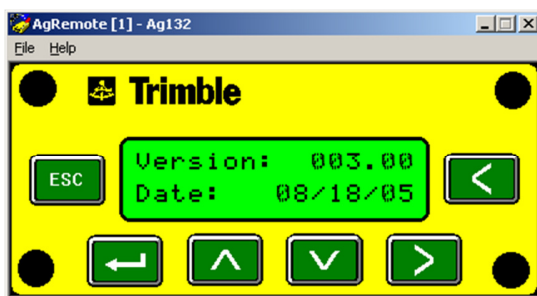
8. Press the DOWN arrow  once and the GPS STATUS screen appears.



9. Press the RIGHT arrow  until the RECEIVER STATUS screen appears.



10. Press the DOWN arrow  until the VERSION screen appears.



The firmware version 003.50 or above is the required firmware version.

**Please contact your nearest OmniSTAR branch below should you require any assistance.**

North, Central & South America	Asia Pacific, China & India	Europe / CIS & Middle East	Africa
+1-713-785-5850	+61-8-9322-5295	+31-70-317-0900	+27 (0) 21 527 8950
dgps@omnistar.com	support@omnistar.com.au	support@omnistar.nl	technical.ossa@omnistar.com